


## DIARY OF UPCOMING FUND RAISING EVENTS

7th September	<p><b>Adidas 5km Women's Challenge:</b> Please join 25,000 ladies in walking or running just 3 miles, in Hyde Park on 17th September. It is a fun day out for the whole family, why not bring a picnic for after the race? All sponsorship collected from our participants goes to our fund raising here at the cathedral. Registration costs just £15 (£5 goes to the cathedral) and every finisher gets a "Goodie Bag".</p> <p>Entry forms are available from Garth House 01634 810074 or Anne Sears on 01634 409113.</p> <p>If you would like to sponsor the team as a whole, please go to <a href="http://www.justgiving.com/rochestercathedraltrust">www.justgiving.com/rochestercathedraltrust</a>. Please could all participants let Lynne in the Development Office know when running numbers are received, so that we can arrange a cap for you.</p>	 
13th September	<p><b>Kent Bike Ride:</b> Ride your bicycle or take a relaxed walk around some of the beautiful churches. Anne Sears and Jill Armitage are organising the walk and Anne can be contacted on 01634 409113. Should you wish to join the cyclists, please contact John Sears at the same number.</p> <p>Sponsor sheets are available from the Development Office in Garth House 01634 810074. We would love to have the young people from the Junior Church join us if they would like.</p>	
19th September	<p><b>Wine and Wisdom Evening</b> in the Community Hall at St Mary's Island. £10 per person including a Fish 'n Chip supper.</p> <p>Tickets available from Garth House 01634 810074. Bring your own drinks. We will be holding a wine auction and raffle. Team tables of 8 can be reserved or individual tickets purchased.</p>	
17th October	<p><b>Murder Mystery.</b> Come and enjoy an hilarious adaptation of a play written by Helen Bradshaw and performed (venue still to be confirmed) by members of Chapter!! A fun evening with a Ploughman's supper and a 'Who Dunnit quiz'. Bring your own drinks.</p> <p>Tickets £10 and available from Garth House 01634 810074.</p>	
1st November	<p><b>Barn Dance in Kings School Hall.</b> Peter Curry will be on hand as caller together with his band, The Skinners Rats, comprising an accordion, fiddle and guitar. Hot dogs will be supplied all you need to do is bring a cool bag with your own drinks! Make it a fun family evening out.</p> <p>Tickets £10 each for adults with 25% discount for under 13's. Raffle prizes. Our thanks go to Leeds Castle who have sponsored a raffle prize through the KM Community Chest.</p>	
15th November	<p><b>Auction:</b> We have started collecting lots for our next auction to be held in the Kings School Hall. If you have anything you would like to donate, or you have a pledge you would like to make, please contact David Sandon on 07931 572907 or Lynne in the Development Office 01634 810074 (office hours).</p> <p>If you have any connections to Leisure facilities or restaurants that you think may make a donation, please let us know.</p>	



# BEACON

The regular newsletter of the Rochester Cathedral Campaign

August 2008

## From the Dean's desk

### Music To Our Ears!



The Saddlers Company have recently pledged a grant of £50,000 towards the music endowment. This is marvellous news, and we are extremely grateful. The money was made available by way of a legacy from a previous Clerk to the Saddlers, RM Sturdy, who had a love of church music and wanted to support it in life and in death.

This demonstrates the importance of continuing to run a legacy campaign, in order to raise long term endowment funds to support vital aspects of the cathedral's life. Music is one of these, and there are various schemes to allow people to support the endowment via a bequest. Updating your will has never been easier, and leaving a legacy to the cathedral can provide you and your family with a memory that will last for ever. Do ask at the office for details.

I would like to say a big thank you to Ron Hoile, who organised an exhibition of his own wonderful paintings earlier in the Summer, which raised £2,000 - what a wonderful contribution, and all by his fair hand!

In this Summer issue you will find a whole host of events planned, involving bike riders, 5km runners, thespians, barn dancers, auctioneers, scrabblers, caterers, and much more. Each and every contribution is valued - thank you so much for your support; and do have a wonderful Summer

*Adrian Newman*

### VOLUNTEERS WANTED!!

**Is there anybody that has some spare time that would like to volunteer to help with events. We particularly need people that can help with the food at catered events, but any help would be appreciated. We sometimes need help moving furniture around or just greeting people at the door. Please get in touch if you would like to help on 01634 810074.**

Thank you.

Development Office, Garth House, The Precinct, Rochester ME1 1SX

T: 01634 810074 Email: [development@rochestercathedral.org](mailto:development@rochestercathedral.org) [www.rochestercathedral.org](http://www.rochestercathedral.org)

NEWSLETTER DESIGN: Our sincere thanks go to Billie Wootton of innov8 graphic design for the very generous offer of her expertise with the Beacon layout. For your design needs, please visit [www.innov8gd.com](http://www.innov8gd.com)

CAMPAIGN TOTAL TO DATE: **£4,167,006.21**

DONATE NOW

by phoning 01634 810074 or go to [www.justgiving.com/rochestercathedraltrust](http://www.justgiving.com/rochestercathedraltrust)

## KINGS ORCHARD EVENTS

We recently held two very successful events in a marquee courtesy of The University of Greenwich.



The first one was a Cheese & Wine party, which was very well attended. We were entertained by the Balgores Band, a 1930's style folk band, who also very kindly volunteered their services freely.

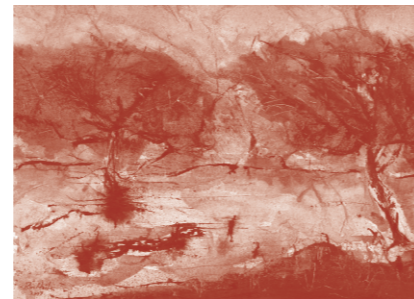
Our grateful thanks go to helpers Helen Bannister, Andrew Coulson and Jara Carter.

The next night the Dean and Lord Astor (Chairman of Rochester Cathedral Trust) hosted a drinks reception which was also very well attended and gave us the opportunity to say thank you to some of the many people that have helped us on our fund raising journey over the past few years.

## ART EXHIBITION – Sunday 29th June

We watched the weather forecast all week, hoping for a warm, sunny day. In addition to the studio, my paintings were hung around the house & too many wet shoes could have been messy! There was a lot of work to be done – framing, hanging, labelling, shopping for the refreshments, cleaning, tidying the house & grooming the dog!

A friend & artist donated some paintings at the last minute, causing a crisis with space but we sorted it out with hours to spare.



On the day the sun shone, the wind dropped & visitors were able to have a glass of something in the garden & wander round the exhibits. So, no mess & a happy day.

Interestingly my bright colourful paintings of Tuscany did not sell as well as my wintry watercolours & Christmas cards. Perhaps the guests were already yearning for Autumn.

As usual, people were very generous & (with the help of gift aid & a friendly bet on the result of Euro 2008) I have been able to contribute £2,000 to the campaign.

Hopefully my art has helped nudge the total for the appeal towards the target.

**Ron Hoile**



## SCRABBLE EVENING

Another successful Scrabble Evening was held on Friday 27 June. Our thanks go again to Mary and Owen Woodfield for their tireless fund raising efforts. Another £207 was raised. Mary would like to advise that Scrabble will resume in the Autumn/Winter, but will be afternoon events. Anyone that would like further information, please contact Mary directly on 01634 843127

## Ancient Stones Untold Stories

Rochester Cathedral Interpretation Project

### Interpretation Project Update



The initial stages of any project always involve lots of paddling below the surface as detailed planning is undertaken and recruitment and tendering gets underway.

#### Planning

We have now submitted the detailed project plan to HLF which is broken down into 28 work packages which range from appointing a project manager to the creation of the glazed entrances at the West and North doors.

We intend to produce a one page timescale summary for wider distribution as soon as we can.

#### Project Manager (consultant)

Anne Fletcher came on board as our Project Manager until February 2009. Anne comes with experience of similar projects at Lambeth Palace, St Martin in the Fields and the Historic Royal Palaces. She is working with two other consultants, Lynn Scrivener who will advise on audience development and marketing, and Jane Malcolm-Davies who will advise on volunteer development and training. A number of meetings with staff and volunteers have already been held.

#### Interpretation Manager

The project is funding a full-time Interpretation Manager for three years and the post was advertised at the beginning of July. One candidate stood out as exceptional, and we are very pleased that Annalise Harvey will be joining us from 1st September. Annalise has a background in theatre and costume and is passionate about bringing history to life. As Interpretation Manager, Annalise will be responsible for supporting and working with the volunteers, particularly the welcomers and guides, as well as the visitor experience. She will be spending a considerable proportion of her time on the floor of the Cathedral.

#### Education Development Officer

The project is funding a half-time Education Development Officer and this post was also advertised at the beginning of July. There were plenty of applicants including our

own Education Officers, Liz and Helen, who applied as a job share. At interview Liz and Helen's professionalism, experience and sheer passion for the Cathedral shone through, and they have been appointed to undertake this role in addition to their current part-time posts!

#### Audio-guides and audio visual

The development work for the audio-guides and audio-visuals is currently out to tender and interviews will take place in August.

#### West and North Doors

Comments on the designs were submitted by a number of interested parties. As this goes to press we are waiting to see if we will be granted permission by the Cathedrals Fabric Commission for England. In the meantime detailed design work has been commissioned from a specialist glass company.

## ALL AGES CAN RUN IN THE ADIDAS 5KM WOMENS CHALLENGE IN HYDE PARK

We would like to say congratulation to Win Lang. She is taking part in the 5km Women's Challenge in Hyde Park on the 7th September. Good for her you say – but did you know she is 90 years old!! How fantastic is that! I am



sure we would all like to wish her good luck for the event. She will be joined by three more generations of her family, her daughter, grand daughter and great grand daughter. If you would like to sponsor Win please either phone her direct on 01634 819021 or get in touch with Lynne in the Development Office.



We would also be happy for any ladies that would like to join us on the day in the event. Bring the family for a picnic. It's a great day out! Sponsor forms are available from the Development Office

CONTACT  
TELEPHONE NUMBER:

PLEASE NOTE THE TELEPHONE NUMBER  
FOR THE DEVELOPMENT OFFICE IS  
01634 810074